



～Fukushima Today～

Steps for Reconstruction and Revitalization in Fukushima Prefecture

Namie Municipal Ukedo Elementary School

Although this school was severely damaged in the Great East Japan Earthquake and nuclear power station accident, it was reopened to the public on 24 October, 2021 as the first earthquake disaster ruins site in Fukushima Prefecture in an effort to pass down the memories and lessons learned from this compound disaster.



**Fukushima
Prefecture**

27 Dec. 2021
New Fukushima Revitalization Promotion
Headquarters

— Index —

■ Towards achieving revitalization

1 Revitalization efforts and challenges

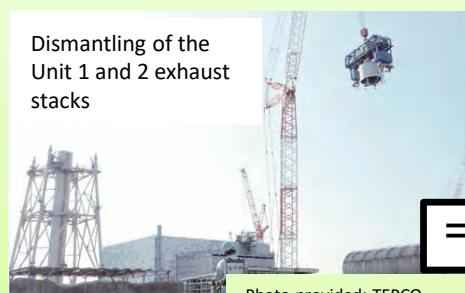
(1)	Decontamination	P1
(2)	Current status of the Evacuation-designated Zone and change in evacuee numbers	P2
(3)	Health of Fukushima residents	P3
(4)	Securing of housing and creating an environment for people to return	P4
(5)	Basic infrastructure	P5
(6)	Industry		
	① Agriculture	P6
	② Tourism	P7
	③ Business investment and employment creation	P8
	④ The Fukushima Innovation Coast Framework I	P9
	The Fukushima Innovation Coast Framework II	P10
(7)	Efforts towards decommissioning	P11
(8)	Strengthening the countermeasures against harmful rumours and the fading awareness of the disaster		P12
(9)	Impact on revitalization efforts		
	① COVID-19	P13

Towards achieving revitalization

Thanks to the great efforts made by the residents of Fukushima and the warm support from within Japan and other countries around the world, revitalization in Fukushima has been making steady progress such as the lifting of evacuation orders and the re-establishment of the living environment. On the other hand, over 34,000 people are still evacuated (as of Nov 2021). In addition, the Prefecture is faced with issues such as having evacuees return home, rebuilding the livelihoods of disaster affected residents, preventing harmful rumours and memories related to the disaster from fading away, revitalizing local industries, developing public infrastructure, etc. New challenges have also arisen with the progress in revitalization. As well, the path to revitalization is still long and difficult as there is a need to strongly request the national government and TEPCO to safely and steadily decommission all reactors in the Prefecture under their responsibilities. This is the major premise of efforts towards the revitalization and reconstruction.

Prerequisite measures for revitalization

- Promoting safe and steady initiatives for decommissioning
- Responsibly dealing with work related to the disposal of ALPS-treated



⇒ P.11

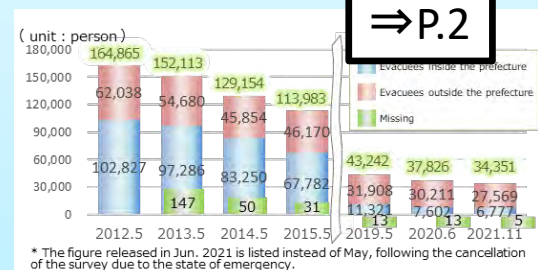


⇒ P.11

Photo provided: TEPCO

Revitalization efforts still in progress

- More than 34,000 people remain in a state of evacuation
- Final disposal of contaminated soil outside the Prefecture within 30 years after launching the Interim Storage Facility



⇒ P.2



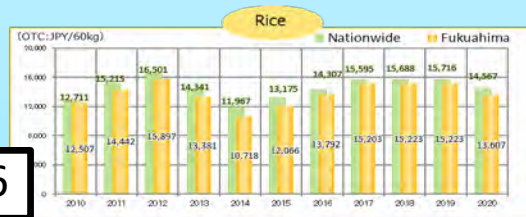
⇒ P.1

- Events affecting revitalization efforts (COVID-19)



⇒ P.13

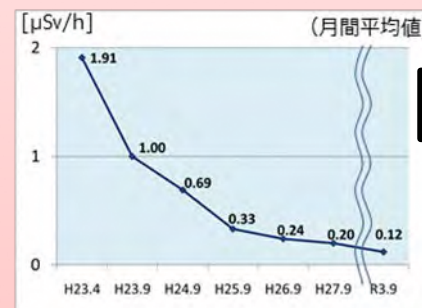
- The disparity between the price of Fukushima's agricultural, forestry and fisheries products and the national average price still remains.



⇒ P.6

Revitalization efforts that have shown great progress

- Atmospheric radiation levels have significantly dropped



⇒ P.1

- Development of transportation networks such as roads



⇒ P.5

- The branding of Fukushima products



⇒ P.6

- The world's unprecedented and major R&D hub for land, sea and air robots and drones



Fukushima Robot Test Field Fully opened on 31 March, 2020

⇒ P.9

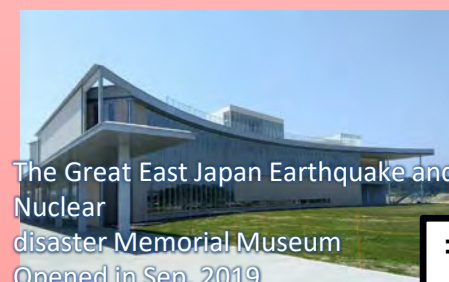
- The hub for realizing a hydrogen based society



Fukushima Hydrogen Energy Research Field Opened on 7 March, 2020

⇒ P.9

- Passing down the records and lessons of the complex disasters to future generations



The Great East Japan Earthquake and Nuclear disaster Memorial Museum Opened in Sep. 2019

⇒ P.10

It is necessary to flexibly and carefully respond to new challenges which arise as revitalization progresses as well as the different issues faced in different areas according to their revitalization progress, and to realize them one at a time.

Promoting the reconstruction and revitalization of Fukushima in the Second Reconstruction and Revitalization Period

(1) Decontamination

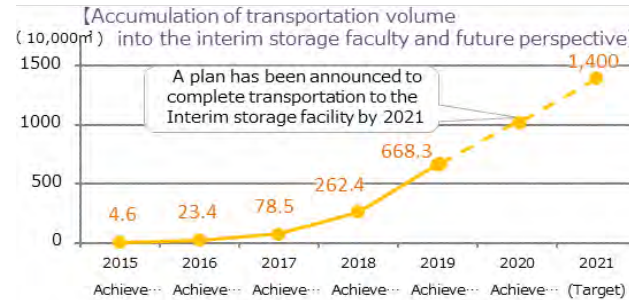
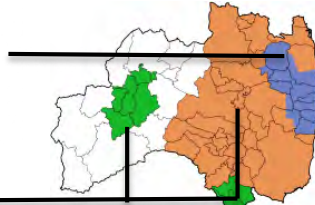
Decontamination of prefectural land has been completed in all areas except for the Difficult-to-return Zone. Atmospheric radiation levels in the Prefecture have significantly dropped, and are the same as other major cities throughout the world.

Municipality-led decontamination

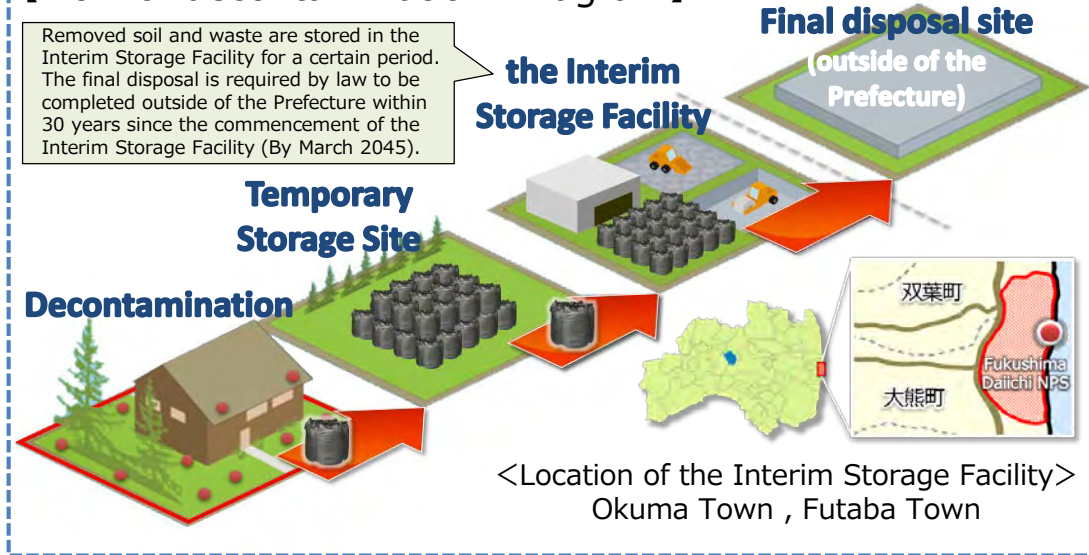
Completed by Mar. 2018

Area the national government conducts decontamination (Blue)

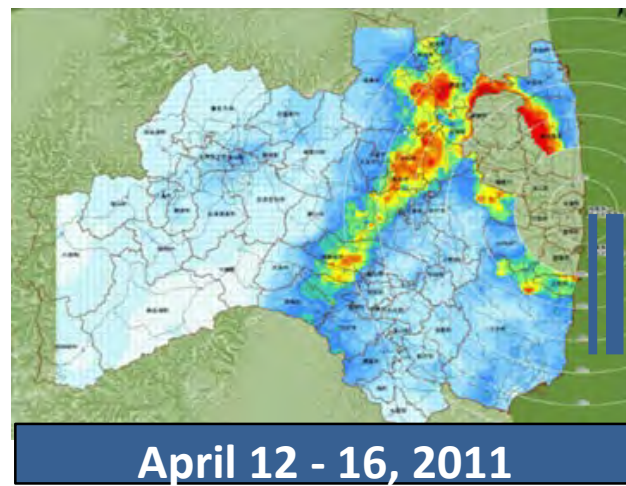
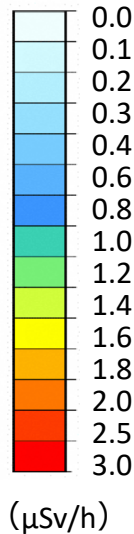
Area each municipality conducts decontamination (Orange, Green)



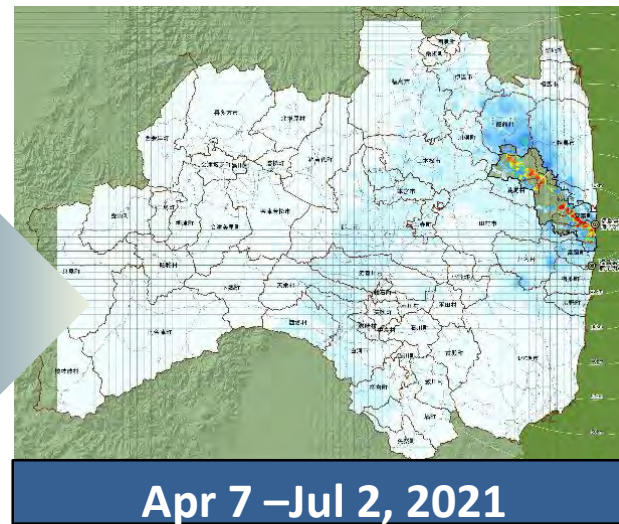
【Flow of decontamination: Diagram】



○ Air radiation dose in Fukushima Prefecture



Substantial decrease



Environmental Radiation Monitoring Centre (Minamisoma City)

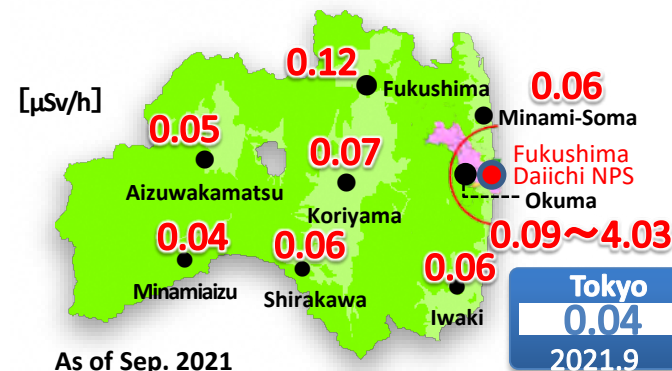
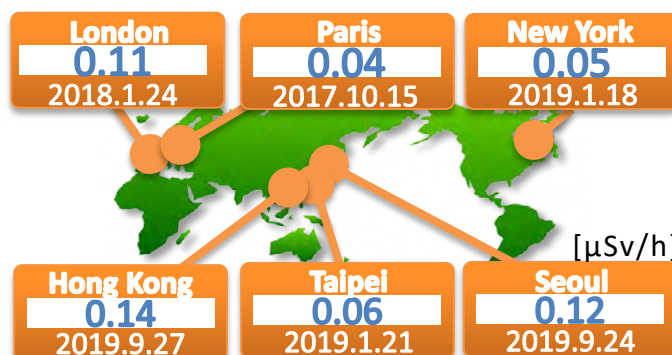


Environmental monitoring around the NPS

Fukushima Prefectural Centre for Environmental Creation Main Facilities (Miharu Town)



Environmental monitoring, research information release education, training, exchanges



【Challenges and Responses】

- Restoration of the land used for Temporary Storage Sites and returning back the land
- Safe maintenance and operation of the Interim Storage Facility as well as safe and secure transportation of contaminated soil
- Final disposal of contaminated soil outside of Fukushima Prefecture
- Decontamination and demolition of houses in the Difficult-to return Zone (except for Special Zones for Reconstruction and Revitalization)