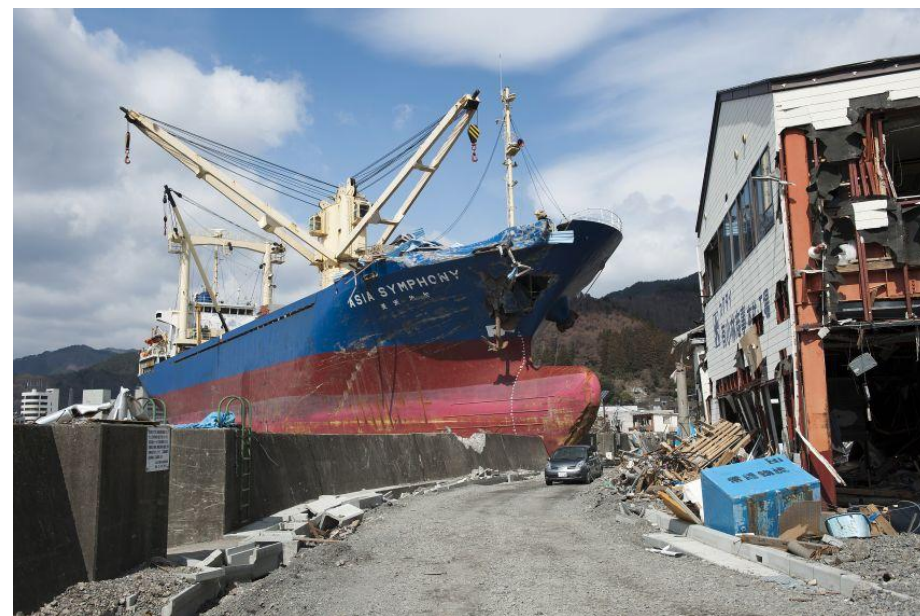


Response to the Great East Japan Earthquake & Tsunami

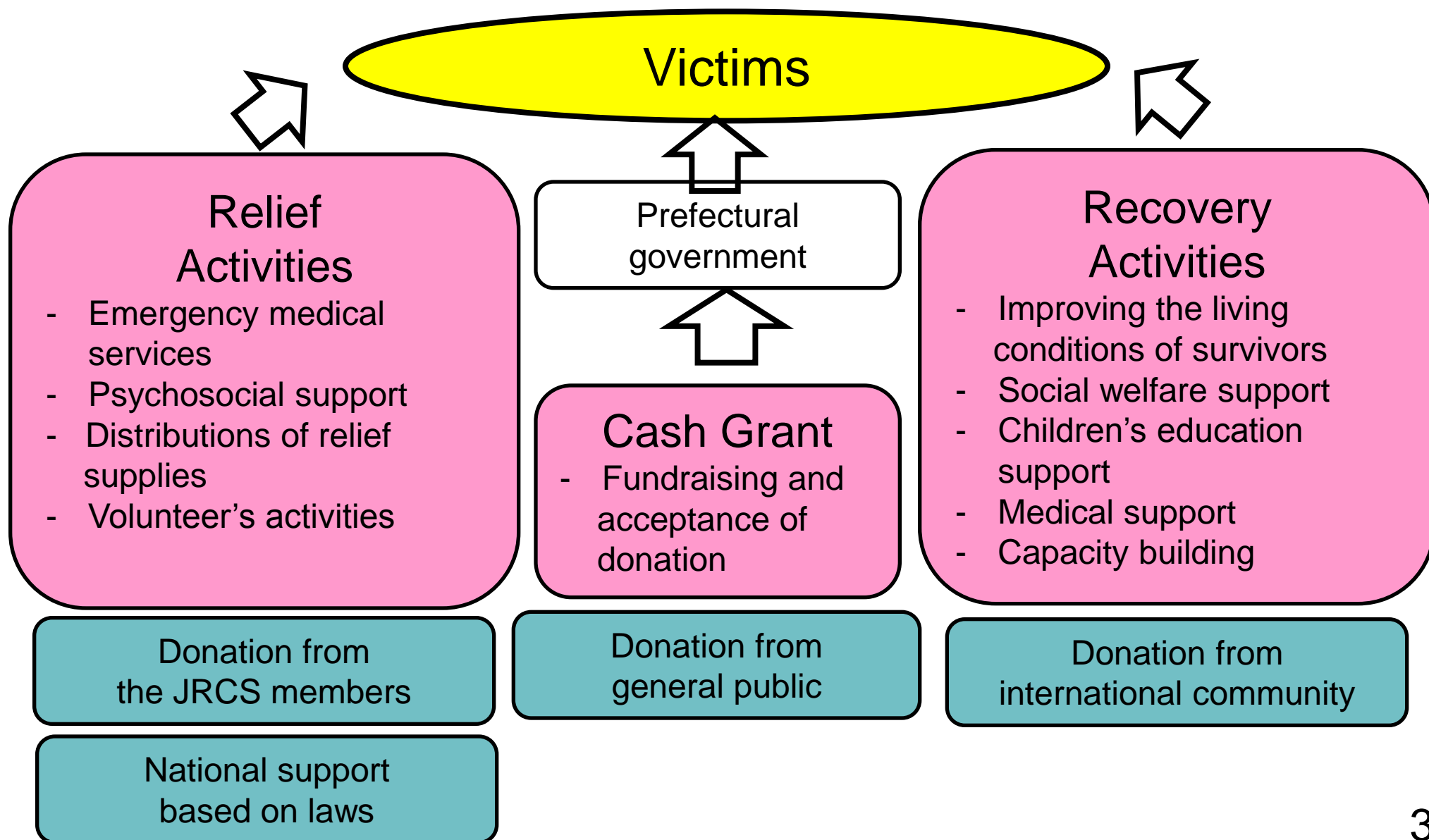
March 2012



日本赤十字社
Japanese Red Cross Society



JRCS Disaster Response Activities



JRCS Facilities and Staff

Facility	Number of Facility	Number of Staff	Remarks
Headquarters	1	451	
Chapters	47	694	
Medical Institutions	92	50,555	Total 37,833 beds 60 Disaster Relief Core Hospitals
Nursing Institutions	26	576	
Blood Centers	66	5,843	Mobile Blood Donation Vehicles 293 Blood Supply Vehicles 626
Social Welfare Institutions	28	923	
Total	419 ※	59,042	※Including adjunct facilities of clinics

Emergency Operations (as of 31 Dec, 2011)



Medical assistance

Mobilized 896 teams
treated 87,445
patients



Response to the Nuclear accident
39 Medical teams supported the
brief home visit treated 473 patients
(the 3rd round scheduled in Feb-Mar)





Psychosocial care

Deployed 718 nurses
consulted 14,039 people



Relief Items



Blankets 132,510



Emergency Kit 30,972



Sleeping Kit 13,500

Volunteer services



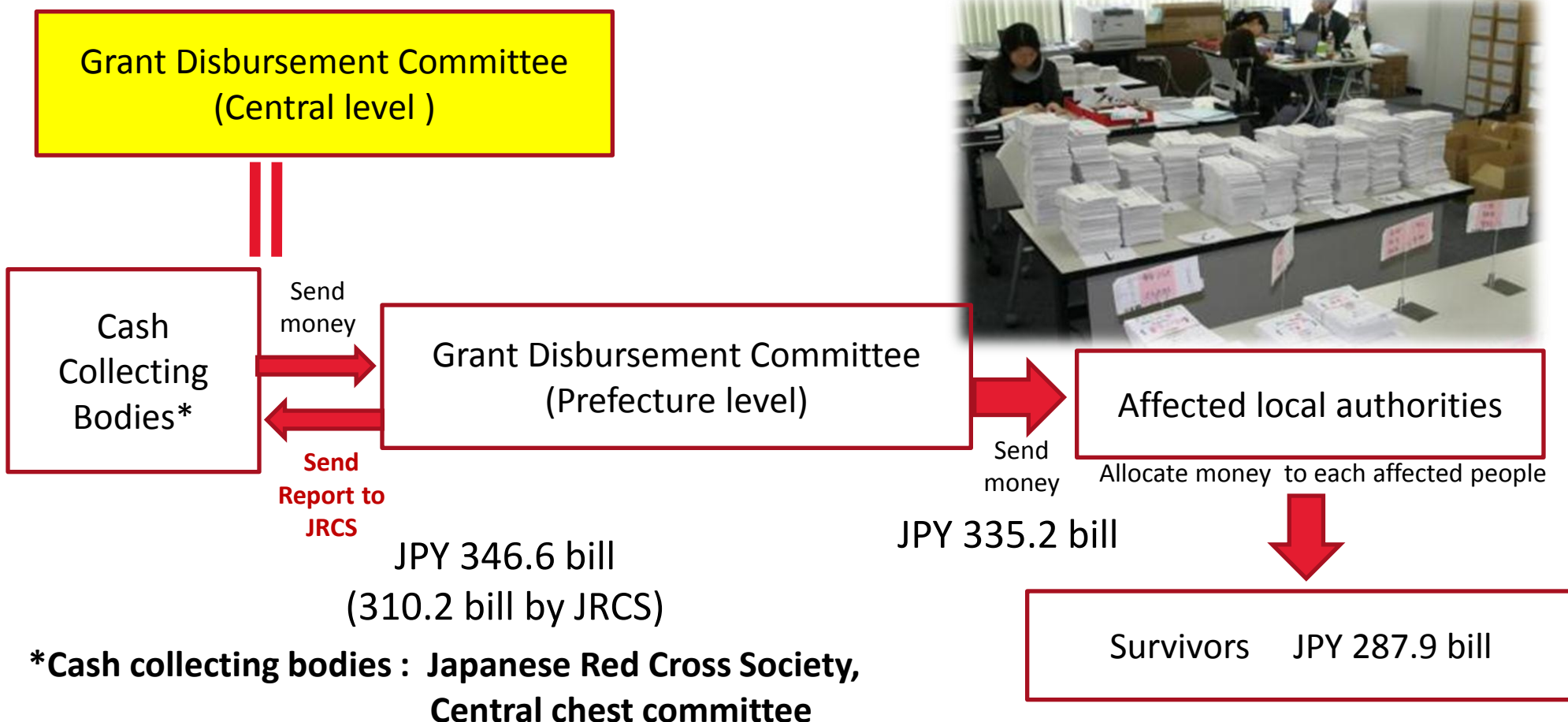
162,538 men power
all over Japan




Cash grant disbursement

(as of 2 March)

Cash collected by JRCS will be distributed to beneficiaries through, the Grant Disbursement Committee (comprised of affected prefecture, JRC, media agencies and others) and will be distributed to those affected, through them.



Support from International Community



Donations from
84 RC/RC and others to reach
approx. JPY53 billion



Fundamental Policy of Recovery Support

1. Effective utilization of international support
2. Support “lives”, “health” and “dignity” of the survivors.
3. Reach broad area and as many people as possible.
4. Support the most vulnerable. (i.e. the elderly, those who require nursing care, and the affected children)
5. Cooperation with central government, prefectures and municipalities on mid-and-long term recovery plan.
6. Secure accountability and transparency of the programme in Japan and abroad.

Support the people in evacuation centres and transition shelters: JPY26.8 bill.



Social welfare support for elderly: JPY1 bill.



Leading Recovery Programmes

Total: approx. JPY53 bill.



Medical Support JPY16.3bill.

Capacity building of JRCS
JPY 2bill.



Education Support: JPY1.2bill.

NO.	Area of Support	Programme	Budget	Actual spending as of Dec.31, 2011
1	Emergency relief	Purchase and replenishment of relief supplies	JPY0. 4bill.	0.4
2	Improving the living conditions of affected people in evacuation centres and transition shelters	Distribution of six electronic household appliances sets, installation of appliance at large-scale evacuation centres, distribution of summer/winter amenity items, psychosocial support, and community bus operations support	JPY 26.8bill.	24.4
3	Social welfare support for elderly	Distribution of medical/nursing beds, Procurement of vehicles for social welfare institutions and municipalities, and deployment of care workers	JPY 1bill.	0.3
4	Education support	Construction of temporary gymnasiums, children's' hall, Provision of school items, and provision of school buses	JPY 1.2bill.	0.04
5	Medical support	Provision of temporary clinics, vaccination against pneumococcus, and procurement & maintenance of medical equipment to gauge radiation levels including Whole Body Counter.	JPY 16.3bill.	0.1
6	Capacity building of JRCS	Strengthening DM capacity of the JRCS HQs, chapters and facilities including provision of relief goods and vehicles.	JPY 2bill.	0
7	Others		JPY 2.3bill.	0
8	Administration	Expense, public relations, and audit.	JPY0.6 bill.	0.3
9	Reserve fund	Reserved to respond to future possible programmes	JPY 2.4bill.	0
		Total	JPY53 bill.	25.5

* 5 million barrels of crude oil donated by the Government of Kuwait = approx. JPY40 billion.

1. Improving the living conditions of affected people in evacuation centres and temporary houses

Evacuation Centre



- Installation of water tanks to provide clean water.
- Installation of electric appliances at large-scale evacuation centres
- Distribution of summer amenity items, insecticide, etc.
- Distribution of winter amenity items
- Psychosocial support

Prefabricated Houses



- Distribution of six electronic household appliance sets.
Target: 128,000 households in prefabricated houses.
Progress: 128,471 households as of 22 Feb.
- Operations of community bus
- Provision of AED and other necessities at the meeting/consultation space in prefab temporary houses.
- Psychosocial support

2. Social welfare support for elderly

Distribution of medical/nursing beds



- 959 units distributed in 161 facilities in Iwate, Miyagi and Fukushima.

Procurement of vehicles for social welfare institutions and municipalities



- Target: 338 units in Iwate, Miyagi and Fukushima

Care workers deployment



- 67 JRCS care workers were deployed to 4 facilities.

3. Education Support

- Provision of items for school clinics (Iwate and Miyagi)
- Provision of items for school kitchen centres (Iwate, Miyagi and Fukushima)
- Provision of school buses (Iwate and Fukushima)
- Provision of school computers (Iwate and Fukushima)



- Red Cross Safety Classes at education facilities. (Iwate and Fukushima)
- Construction of temporary gymnastic hall (Iwate and Fukushima)
- Indoor Play Ground (Fukushima)

4. Medical Support (1)

- Regional Healthcare Support

- Financial support for the vaccination on elderly for pneumonia in the affected area.
- 560,000 people are targeted. 101,287 received vaccination at the end of November 2011.



- Assistance for nuclear power plant accident victims
- Provision of health monitoring support (i.e. maintenance of equipment for Whole Body Counter, thyroid gland monitoring, measuring radiation in food.)

4. Medical Support(2)

- Rehabilitation of health infrastructure in Ishinomaki region (Completed in Dec)
 - Construction of temporary night-time emergency medical centre (Ishinomaki)
 - Construction of temporary hospital (Minamisanriku)
 - Reconstruction of affected hospitals (Motoyoshi, Onagawa and Minamisanriku)
 - Establishment of training centre for disaster medical care.
(Ishinomaki Red Cross Hospital)
 - Simulation training on disaster management and training of disaster medical support.
 - Personnel training of disaster management.
(Establishment of training centre for nurses)
 - Compilation and research of disaster medical data.
 - Stockpiling of disaster management equipment
 - Medical relief headquarters at the time of disasters and the function of evacuation centre.

